



Snoqualmie Valley Public Schools

Dr. Richard A. McCullough
Superintendent

February, 2005

Snoqualmie Valley School District— Bond Projects

By Dr. Richard McCullough
Superintendent

The projects thus far have benefited from the spring-like conditions we are presently experiencing and only the winds have been of issue. The bond projects remain on schedule with three major projects headed for student occupancy in September of this year.

The **Cascade View Elementary** (Elementary School #5) continues with the Babbitt Neuman Construction Company's team installing roofing and masonry block over the most extensive portions of the building and nearing the framing completion of the final wing. Mechanical, electrical, and building system infrastructure are all in process. Doors will open for students in September 2005.

The **Mount Si High School Gymnasium/Field Expansion and Modernization** multiple phase development continues to be the most complex of projects and proceeds as follows:

Phase II (Final Phase) – The Berschauer/Phillips Construction Company's team is nearing completion of the concrete pads and columns on top of the previously installed Geo-piers. The large concrete beams that will be supported by these pads and columns are in route and will be installed over the next few weeks. Masonry block walls, roof, exterior bleachers, concession stands, and field construction follow. Beginning May 1st the interior gymnasium modernization work will begin and run concurrently with the outdoor work. Doors will open for students and football and soccer will begin in September 2005.

The **Chief Kanim Middle School Gymnasium Expansion** continues with the Construction Enterprises and Contractor's team nearing completion of the new sidewalks, the steel building frame and roof. The masonry block and interior building work will begin in the next few weeks. Doors will open for students in September 2005.

The new **Middle School #3** master site plan has been accepted by King County. Phase I site development construction is undergoing permit review and the bid process is anticipated within the next few months in order to benefit from doing the earth-work during the summer months. Phase II building construction is still scheduled to begin in 2007. Student occupancy remains scheduled for September 2008.

The **District wide fiber optic high-speed electronic communications network** right-of-way and permit approvals are down to one. The process for contractor selection is underway and the district wide work is anticipated to begin within the next few months. Existing schools and Cascade View Elementary will be connected by September 2005 and the new middle school #3 in September 2008.

We continue to request that you visit the District website www.snoqualmie.k12.wa.us **School Bond Projects** on a regular basis for numerous pictures, illustrations, and other information that will allow you to keep track of the progress of these exciting projects.

Once again, we want to thank you for your continued support of the Snoqualmie Valley School District in our effort to provide first rate educational facilities for our children.

Inside:

- *Spring Testing Schedule* Page 2
- *Boundary Update* Page 3
- *Professional Development/Planning Time* Page 3
- *Fall City Elementary School News* Page 4
- *Snoqualmie Elementary School News* Page 5
- *2005—2006 Kindergarten Registration* Page 6
- *2005 Extended Learning/Summer School* Page 7
- *Snoqualmie Middle School News* Page 8 & 9

Spring Testing Schedule

Iowa Tests of Basic Skills (ITBS)

From **March 7 through April 1** students in **grades 3 and 6** are tested with the **Iowa Tests of Basic Skills (ITBS)**.

Students are tested in reading, mathematics, and language arts. The tests require students to read critically and with understanding, to compute with accuracy, to solve mathematical problems, and to demonstrate their knowledge of important ideas, principles and procedures.

Students in **grades 3 and 5** will participate in the **Cognitive Abilities Test (CogAT)**. Scores from this test are used a part of the determining process of our Highly Capable program.

Washington Assessment of Student Learning (WASL)

From **April 18 through May 6** students are tested with the state-level **Washington Assessment of Student Learning (WASL)**. This is a statewide test that is conducted to measure Washington students' level of proficiency in the Essential Academic Learning Requirements. They require students to complete short-answer questions, compare and contrast information from multiple tests, draft short essays, and answer multiple-choice questions. Students in **grades 4, 7, and 10** are tested in mathematics, reading, writing and listening. Students in **grades 5, 8, and 10** will participate in a WASL science test. Students in grades 3, 5, 6 and 8

will have an opportunity to participate in a Pilot WASL consisting of math and reading.

Iowa Test of Education Development (ITED)

April 18 through May 7 will be the window for the state assessment of **grade 9**. The test used is the Iowa Test of Education Development (ITED).

The students are tested in reading, mathematics, social studies, science, and language arts. The tests require students to read critically and with understanding, to compute with accuracy, to solve mathematical problems, and to demonstrate their knowledge of important ideas, principles and procedures.

Each building will coordinate a schedule for the tests designed to maximize student performance and minimize the disruption of the school day.

For further information you may contact;

- **Your building principal**
- **Kathy Lohman, Student Services Director at 425-831-8015**
- **Don McConkey, Assistant Superintendent, Instructional Services at 425-831-8018**



Snoqualmie Valley Public Schools Board of Directors

Rick Krona, President

Rudy Edwards, Vice President

Becky Jorgensen Kristy Sullivan Kim Horn

- ★ *2002 American School Board Journal's Magna Award Winner*
- ★ *2000-2001 Washington State Recognized Board of Excellence*

School Board meetings are held on Thursdays. Dates of upcoming meetings are listed below. These meetings are held at 7:30 PM in the Administration Office Boardroom. The address is 8001 Silva Ave. S.E. in Snoqualmie. The public is encouraged to attend. Agendas for Board meetings are generally available online the Monday prior to a meeting.

Upcoming meetings:
February 10, March 3, April 7



Important Dates to remember

- February 7—SAT registration deadline for March test
- February 11—ChildFind @ SVSD
- February 16—SVSF @ DO
- February 17—9th—12th grade Late Arrival
- February 18—P—12th grade Early Release No PM Kindergarten
- February 21—No School Presidents' Day
- February 22—25 Mid-Winter Break—No School
- February 28—Classes resume

Boundary Update

Over the past several months the Snoqualmie Valley School District has conducted an elementary attendance boundary review process. The primary purpose of conducting the boundary review was to address the opening of Cascade View Elementary School in Snoqualmie and to examine existing and projected overcrowding at other elementary schools in the district.

The School Board appointed Elementary Attendance Boundary Advisory Committee completed its study and analysis of school boundaries and presented its recommendation to the School Board on January 13, 2005. A public hearing was held on January 27th to gather additional community input on the boundary proposal. Hundreds of comments were received on the matter since the process began, and many factors have been taken into account in this difficult decision.

After consideration, the School Board adopted the committee recommendation of Boundary Option 2a. The following changes will take place for the 2005-2006 school year:

- a) All existing Snoqualmie Ridge neighborhoods will attend Cascade View Elementary School
- b) Circle River area northwest of North Bend will attend Snoqualmie Elementary School
- c) The streets, homes and neighborhoods along Ribary Way and 415 Way SE (to the entrance of The Uplands), including Harmon Heights, Forster Woods, and Rock Creek Ridge will attend Snoqualmie Elementary School
- d) The area west of North Bend, including NW 8 St, NW 14 St, and 394 PL SE will attend Snoqualmie Elementary School
- e) Clarifies Wilderness Rim will continue in the North Bend Elementary attendance area

Detailed descriptions and maps of the boundary changes are available on the District web site at www.snoqualmie.k12.wa.us. If, as a result of these boundary changes, your family would like to request to remain at your current school for the 2005-2006 school year, you must submit an intradistrict transfer request form by March 15th, 2005. Transfer requests submitted after March 15th will not be considered until school enrollments are finalized on September 1, 2005.

Please note that the District will allow current 4th graders and their siblings, impacted by the boundary changes, to remain at North Bend Elementary for the 2005-2006 school year only. However, families choosing to exercise this intradistrict transfer option must provide their own transportation to and from school and a separate intradistrict transfer request must be submitted for each child by March 15th, 2005 (forms are available at schools).

If you have questions about the boundary changes please contact Jeff Hogan at 831-8004 or at hoganj@snoqualmie.k12.wa.us.

Professional Development Planning Time

After a year and a half of researching and investigating the feasibility of implementing a weekly two hour early dismissal initiative with the Snoqualmie Valley School District, our School Board, at the January 27, 2005 School Board meeting, approved the Professional Development Planning Proposal for implementation beginning the 2005—2006 school year.

The advantages of providing staff with this regular and consistent time each week to plan individually, as a grade level and/or department team; align curriculum; engage in ongoing professional development related to newly adopted curriculum, technology, instructional strategies, and classroom assessments, will have a positive impact on student learning and achievement. This time will also be used for parent/teacher conferences, time to meet with other teachers across grade levels, continue training and implementation of the Standards-based reporting system and the eFOLIO system at our high school along with addressing numerous initiatives related to the No Child Left Behind Federal legislation.

Prior to the beginning of the 2005 –06 school year, each of our schools will be arranging a wide range of engaging after school activities for children during this two hour block of time.

For additional information, you can view the entire proposal at our district's website; www.snoqualmie.k12.wa.us

PARENTS OF 5-8TH GRADERS,

You may be one of the 80% who say alcohol and other drugs are a major concern. Help prepare and inform yourself with this FREE parenting series, "Guiding Good Choices," a locally research based 5-week curriculum shown to increase school success and lower rates of initiation of alcohol, tobacco and marijuana use. The program teaches parents (of 11-14 year olds) to set guidelines, give consequences and increase family bonding, all proven to reduce risky behaviors. Your child will attend the 3rd session on building refusal skills.

Classes: 5 Tuesday's - 6:00-8:00 p.m. - March 1 – March 29 in the MSHS Library

* To register, return this form to School Counselor. For more info call Phoebe, 888-6683 x 204

*Please RSVP for dinner & childcare for the first night.

Free Dinner: 5:15 p.m. in the **Wildcat Café.** **Free Childcare** in the **Faculty Lounge.**

Class is being offered by: Friends Of Youth in conjunction with Snoqualmie Valley School District.

Sponsored by: Snoqualmie Valley Community Network, King County Public Health Alcohol And Other Drug Prevention Program, King County Community Organizing Program, Fall City Days, Rotary Club of Snoqualmie Valley and CKMS & SMS PTSA.

Endorsed by: CKMS & SMS PTSA.

Name(s): _____ Phone: _____

#Dinner:

#Childcare:

e-mail: _____

Ages:

(1st Session)

Fall City Elementary School



This year Fall City Elementary School is excited to offer 3 programs to help support learning at different grade levels. With support from our PTSA we are able to provide support programs at 1st, 2nd and 4th grade. These programs provide a small group instructional setting for those students that are working hard to improve.

Our 1st and 2nd grade support programs are targeted to help students with reading and writing strategies. These programs are taught by certificated teachers. The teacher works closely with the student's classroom teacher to plan lessons that will meet the specific needs of the student being served. These learning groups consist of 3 to 5 students in number.

This year we are also pleased to offer a 4th grade WASL support program. This program is aimed at providing students skills that will help them be successful on the state mandated test. A student serviced by this program is given support with basic skills and answering techniques. This WASL support program is taught by a former 4th grade teacher at Fall City Elementary School.

The Fall City Elementary PTSA has always been a supportive and important part of our school. The staff at Fall City Elementary is excited to be able to offer these programs to our students and we are thankful to our PTSA and our community for their continued support and commitment to our educational goals.

Snoqualmie Elementary School

We have had an outstanding year at Snoqualmie Elementary School, a year of growth, learning, and opportunity, which we will carry into the second half of the school year.

Students have been busy in many leadership activities including reviewing playground activities, training in peer mediation, rewarding classmates who have received "Cougargrams," and most recently rallying for support for the Tsunami Relief Fund. Snoqualmie Elementary has joined efforts with two other schools in our district bringing in cash and coins to send off to the Red Cross. This drive ends on February 18!

Our PTSA has been busy this year organizing events to support our school. They kicked off the year with a well-organized Walk-a-thon, which was the perfect start to this year's theme – "Healthy Kids.....Active Minds!" In November, we had a wonderful auction at the Mt. Si Fitness and the proceeds have gone to support student activities and staff projects. In March, we will have our Art/Science Family Fun Night. Last year, we had a large number of student displays and expect and even bigger turn out this year!

Our grade level teams have been meeting on a monthly basis, focusing on consistency in instruction in reading, writing, and math. We are looking at the standards on our report cards and developing assessments which will be used consistently throughout each grade level.

The majority of our staff has been trained in the Thinking Skills and several staff members attended the follow-up classes in designing units. Each grade level has outlined on at least one critical thinking skill to focus on each trimester, using data from classroom-based assessments and the W.A.S.L. to help drive our decisions. In addition, a Thinking Skills study group has begun meeting every month until the end of the year to edit strategies and graphic organizers and to design lessons.

Our Learning Improvement Team continues to focus on our math and consistency goals.

We are exploring potential enrichment programs and strategies to differentiate instruction. We have also reviewed our School Survey results, based on the nine characteristics of highly effective schools, and brainstormed ways of improving performance in several areas.

The motivation committee is organizing diversity activities. Every two weeks staff will be focusing on one of the following qualities: respect, responsibility, trust, honesty, being fun to be with, and being good bosses. This project will provide teachers with lessons that support these qualities within the classroom. Students will embrace these qualities in their day to day lives. We are planning a culminating activity this spring to celebrate our diversity successes!

For additional information on SES, check our website at www.snoqualmie.k12.wa.us/school/ses

Cori Pflug
Principal

Child Screening Clinic - Friday, February 11, 2005

The Snoqualmie Valley School District will conduct a three to five-year-old Child Screening Clinic on Monday, October 22, 2004. Screening includes the areas of social development, large and small muscle development, language skills, cognitive development, hearing and vision screening. Parents are encouraged to have their child screened if they have any concerns over their child's development. There is no cost to parents. The screenings will be held at Snoqualmie Elementary School on the following dates:

February 11, 2005

April 29, 2005

Please call Louise Rasmussen (425/831-8085) if you would like more information or to set up a ChildFind appointment.

Kindergarten Registration begins in March

The Snoqualmie Valley School District's "Kindergarten Registration" is scheduled for March, 2005. All children who will reach age five by August 31 are being requested to participate by being registered to enter Kindergarten next fall.

The schools and times are as follows:

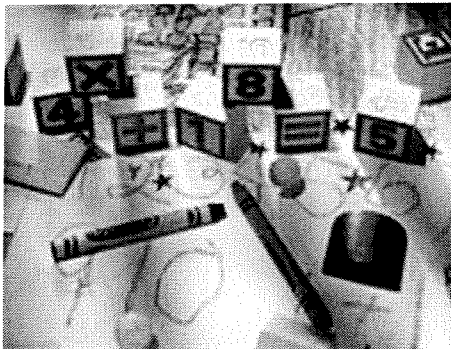
<u><i>Snoqualmie Elementary School:</i></u>	<i>Tuesday,</i>	<i>March 8</i>	<i>1:30-3:00 p.m. and 6:30-8:00 p.m.</i>
<u><i>Cascade View Elementary School</i></u>	<i>Wednesday,</i>	<i>March 9</i>	<i>1:30-3:00 p.m. and 6:30-8:00 p.m.</i> <i>(CVES registration will take place at Snoqualmie Elementary School)</i>
<u><i>North Bend Elementary School:</i></u>	<i>Wednesday,</i>	<i>March 9</i>	<i>1:30-3:00 p.m. and 6:30-8:00 p.m.</i>
<u><i>Fall City Elementary School:</i></u>	<i>Thursday,</i>	<i>March 10</i>	<i>1:30-3:00 p.m. and 6:30-8:00 p.m.</i>
<u><i>Opstad Elementary School:</i></u>	<i>Thursday,</i>	<i>March 10</i>	<i>1:30-3:00 p.m. and 6:30-8:00 p.m.</i>

A birth certificate and proof of legally required immunization is needed at that time.

The Washington State Immunization law requires a minimum of four doses of either DPT/DTAP with the last dose given after age four for children prior to entering school. Other immunization requirements include: three doses of polio vaccine (OPV or IPV) with the last dose received after four years of age; two doses of measles-containing vaccine; one dose of mumps-containing vaccine; and, one dose of rubella-containing vaccine—given no earlier than one year of age and 30 days apart to assure adequate immunity; and, three doses of Hepatitis B vaccine given according to the following schedule: **minimum** interval between dose 1 and 2 should be **28 days** (1 month), **minimum** interval between dose 2 and 3 should be **56 days** (2 months), and **minimum** interval between dose 1 and 3 should be **112 days** (4 months) with dose 3 given no earlier than 6 months of age. Hepatitis series must be started prior to Kindergarten entry in the fall.

Parents or guardians who have no immunization records or have questions about the types of vaccines their child has received can consult with their doctor or the local health department.

No child can be admitted to school without the above information or a signed exemption on file.



All Day Kindergarten offered at two Valley Schools

North Bend Elementary and Snoqualmie Elementary School's will both offer full day kindergarten for the 2005—2006 for a fee of \$220.00 a month. Those wishing to enroll their child in this program will need to register at their home school and complete the appropriate paperwork. All placements will then be chosen by a lottery that will be held on March 11, 2005.

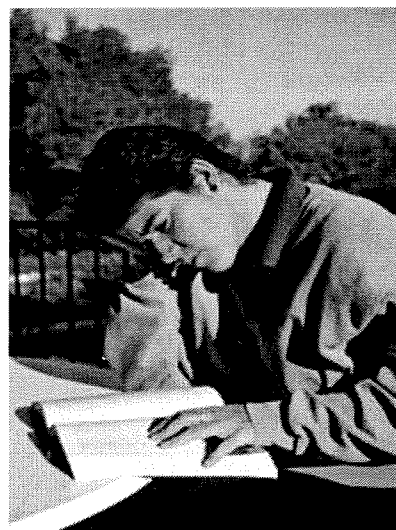
Those chosen who have a home school of NBE or OES will attend North Bend Elementary School. Those with a home school of SES, CVSD, or FCES will attend the SES full day program.

If you would like any further information or have any questions please call your home school office.

Extended Learning/Summer School Program to Begin

Information regarding the Snoqualmie Valley Public Schools 2005 Extended Learning/Summer School Programs will be available at all district schools in April.

Questions?
Call 425-831-8018



Snoqualmie Valley Schools Foundation

2004—2005 Grant Selections

The Snoqualmie Valley Schools Foundation approved the 2004—2005 Grant Selection Team's recommendation to award grants proposed by teachers, staff, and parent and student groups in the Snoqualmie Valley School District.

Recipients are: Opstad Elementary School, Sharon Miller and Iileen O'leary-Kirshner. Snoqualmie Elementary School, Susan Head, Janelle Coughran, and Melanie Culver. North Bend Elementary School, Amber Burton and Lisa Radmer. Chief Kanim Middle School, Mark Tucker, Debbie Fratter, and Julie Lagace. Two Rivers Alternative School, Denise Atkinson, Joe Burgener, Kathy Kerr, and Elaine Burgener. Mt. Si High School, Andrew Rapin, Elaine Harger, Joe Galagan, Kenneth Hagler, Joe Dockery, Susan Fergusson, and Adam Rupert.

The Foundation is an all-volunteer organization separate from the School District and does annual fund raising to pay for projects which directly benefit our students each school year. Contributors to the Snoqualmie Valley Schools Foundation include parents, individuals, business, community groups, corporations, and foundations.

Learning in Action at Snoqualmie Middle School

2005 Academic Goals and Expectations

Snoqualmie Middle School reflects the Eagle Spirit by being confident about our learning improvements, student achievement and ability for all students to get along with peers and adults. The 585 students demonstrate strong achievement on the WASL reading, writing and math. The staff and Learning Improvement Team (comprised of educators and parents) analyze student performance results and identify specific goals and plans to ensure all students will meet standards. The following goals target our focused vision: "Every student can learn, and every student will learn when presented with the right opportunity to do so."

SMS Learning Improvement Goals:

READING

84% of SMS 7th graders will meet or exceed standard on the 2005 WASL Reading test

Areas for specific action to improve comprehension:

- Student makes inferences or predictions based on the reading
- Student thinks critically, analyze author's purpose in a literary text and effectiveness for different audiences
- Student identifies facts and opinions in text
- Student applies understanding of literary text elements, features and graphics
- Student analyzes character setting, plot, conflict resolution, simile, metaphor

Continuing to develop reading staff, identifying struggling students and designing instruction are efforts that support improvements in reading. We also expect students to practice reading, stay focused in class, and take their learning seriously to become strong readers.

MATH

72% of SMS 7th graders will meet and or exceed standard on the 2005 WASL Math test

Areas for specific action to improve skills:

- Student demonstrates a strong foundation of number sense and measurement skills computation
- Student communicates and demonstrates problem-solving processes
- Continued practice and assessment of the five mathematical strands

Communication between grade levels to establish targeted math standards, common strategies, and expectations supports this learning plan.

WRITING:

84% of SMS 7th graders will meet or exceed standard (score 9 or higher) on the 2005 WASL Writing test

Areas for specific action to improve skills:

- Student maintains logical organizational pattern with adequate focus on topic and supporting details
- Student demonstrates effective language and appropriate word choice including transitions
- Student demonstrates correct spelling and conventions

Common writing practices established across grade levels, analysis of student writing with specific feedback, and guided teacher instruction help to improve writing skills.

We are committed as a staff at Snoqualmie Middle School to learn effective practices that support student academic achievements. We encourage parents to guide their child to perform with their best efforts. At the same time, we help our students to set goals and

take ownership of their learning.

Enrichment through Extra-Curricular Programs

At Snoqualmie Middle School we believe that every child can learn, and every child will learn when presented with the right opportunity to do so. The right opportunities present themselves in many aspects, and we see these opportunities to be inclusive of activities both in and out of the classroom. One way we make the most of the right opportunity as a teachable experience is through our extra-curricular program.

At Snoqualmie Middle School, we strive to provide an extra-curricular program that is influential in developing positive personal characteristics. These programs -- our academic clubs, athletics, and the arts -- can be one of the finest places to learn and practice being humble, ethical, honest, fair, hardworking, courageous, positive, supportive, self-disciplined, unselfish, persistent, mentally tough, and to live with integrity. Our extra-curricular program is a building block for personal development.

The following activities comprise Snoqualmie Middle School's extra-curricular schedule for 2004-2005:

SEASON 1

Cross Country
Football
Volleyball
Jazz Band
Yearbook

SEASON 2

Girls Basketball
Wrestling
Art Club
Jazz Band
Knowledge Bowl
Math Team
Yearbook
Ski/Snowboard Club

SEASON 3

Boys Basketball
Girls Soccer
Art Club
Jazz Band
Drama
Knowledge Bowl
Math Team
Yearbook
Ski/Snowboard Club

SEASON 4

Golf
Track
Art Club
Jazz Band
Drama
Yearbook

"The lesson you teach today is not confined to the walls of a classroom. Once it is implanted in the heart and mind of a child, it can change the world."

~Unknown Author

SMS Enjoys Outstanding Parental Support

The SMS parent community soars! We value the many hours that parents contribute to our school. Parents are involved in classrooms, on grade-level teams, in the office, on field trips, participating on our building Learning Improvement Team and actively engaged in the PTSA. SMS-involved parents care about their children and all children at our school. During each PTSA meeting, the group creates learning opportunities for parents as they guide their adolescents in this ever-changing time of life. How to apply "Love and Logic" principles, how to establish clear boundaries from the recent Party Patrol talk, and networking with a wonderful community of parents are just some of the benefits that our PTSA offers. We are incredibly appreciative of the grants provided for enhanced resources for teachers and students! Ten thousand dollars went to specific grade levels requesting funds to enhance their learning program. All these caring efforts are appreciated by each SMS member. Finally, we are thankful for the partnership of each parent to help with problem solving and the extra support given at home to help our students establish goals and plans. We know from research that parent involvement is critical to a safe school where children will achieve and learn.