

SVSD 2015 Bond Program

Mount Si High School Replacement Progress Status Report

Date: December 15th, 2016
To: Ryan Stokes
Copy: Carolyn Malcolm, Joel Aune
From: Clint Marsh
Subject: **December 15th Current Progress Status**

Weeks from November 15th to December 15th, as follows:

New:

- **Temporary Parking Lot Construction**
 - Storm Drainage Pond Construction Complete
 - Underground Drainage Utility Construction Complete
 - Off-Site Soil Hauling Operations Complete
 - Rock/Gravel Haul-In Operations Complete
 - Temporary Parking Lot Crushed Rock Surface Complete
 - Perimeter And Drainage Pond Fencing Installation Has Begun
 - Parking Stall Concrete Wheel Stops Installation Has Begun
 - Temporary Directional Traffic Signs Are Being Installed
 - Bus Loop Asphalt Paving Is Pending Weather
 - **December 30th - Parking Lot Is Open For Use**
- **Phase 0 Building Pad Construction**
 - Off-Site Hauling Operations For Remaining Pad Area Is Pending Weather
 - Rock/Gravel Haul-In Operations For Remaining Pad Area Is Pending Weather
- **Stone Column Sub-Grade Reinforcement**
 - City Stone Column Construction Permit Issued
 - Stone Column Contractor Mobilized On Site
 - Both The Large And Small Crane/Probe Assemblies Are Complete
 - Stone Column Construction Has Begun With Both Crane/Probe Installation Rigs

Previous Relevant Status Items:

- Planning, Visioning, Education Specifications, Schematic Design, Design Development, Ten Development Permits (as listed in the September 16th Status Report), Initial Demolition Projects Complete, Relocation of the Twelve Classroom Portable Wing and TLC Portable, Installation of the Two Double-Wide Temporary Portables, Silt Fence Installation, Surface Water Management Structures Installed, Trucking Haul Roads Constructed, Crane/Probe Assemblies Complete...

Future Activities: - Finalization and Completion of Construction Documents

- Phase One and Two City Building Permit - Continues Under Review

- Phase One and Two General Contractor Bid Process - January 24th thru March 7th, 2017

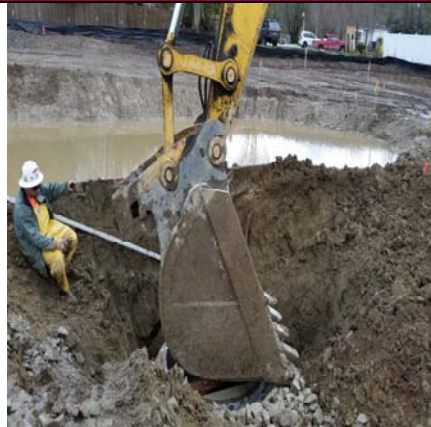
Attachments:

Progress Photos - November & December 2016

Snoqualmie Valley SD Pictures Taken: Nov & Dec - 2016 -Various Times
Mount Si High School Replacement Project - Phase 0 **Progress Photographs**



End Of Drain Pipe Run For Control Vault



Rock For Vault Base And Leveling



Measuring Up For The Flow Control



Installation Of Surface Water Flow Control



Surface Water Filtration Drainage Vaults



Filtration Drainage Vaults Installed



Parking Lot Final Rock Over Spall Base



Front Lot Cranes Arrive For Snowy Setup



Some Assembly Required



Small Crane Ready For Lifting



Small Stone Column Probe Arrives



Sunny Day For First Stone Column Install