

SVSD 2015 Bond Program

Timber Ridge Elementary Progress Status Report

Date: February 12th, 2016
To: Ryan Stokes
Copy: Carolyn Malcolm, Joel Aune
From: Clint Marsh
Subject: **February 12th Current Progress Status**

Week February 5th to February 12th, as follows:

New:

Phase 2 - Building Construction

- **Exterior weather/air barrier wrap, masonry flashing/wall cleats, and masonry veneer on East Wing...**
- **Interior/Exterior Hollow Metal Window/Door Frames installed in East Wing - South Wing pending...**
- **Large & Small Exterior Metal Windows installed in East and South Wings - North Wing pending...**
- **Fire Sprinkler System installed in East and South Wing - North Wing pending...**
- Heating/Ventilation Units set in the East and South Mechanical Mezzanine - **North Wing pending...**
- Walls continue in the Administration Area - Music, Stage, **Multi-Purpose and Gymnasium pending...**
- North Wing and Library roof truss and sheathing installation continues - **Administration in process...**
- Exterior and interior air barrier installations/sealants in East and South Wings - **North Wing pending...**
- HVAC Ductwork installed in East and South Wing - **North Wing pending...**
- Insulation and Sheet Rock installed in East and South Wing - **North Wing pending...**
- Roof Shingles installed on East Wing and South Wing - **North Wing Nearing Completion...**
- Ice & Water Shield/Roofing Underlayment installed in East, South and North Wing - **Library Pending...**
- Spray on waterproof membrane, footing insulation, and under-slab roll out sheet membrane installation is 76% complete - **Music, Stage, Multi-Purpose and Gymnasium Wing in process...**

Previous Relevant Status Items:

- Planning, Education Specifications, Design, Permitting, Tree Harvesting, Stump Grinding, Silt Fence Installation, Off-Site Hauling Operations, Rock/Gravel Haul-In Operations, Sanitary Sewer, Storm Drainage, Water System, On-Site Surface Water Sediment Pond, Building Slab, Parking Lots, Playgrounds, Slope Sub-Grades, Water Connection to City System, transition from the Phase 1 to Phase 2 contractor, on-site processing of topsoil, crushed rock sub-base and asphalted treated base in the entry, parking lots, exit, gravel access roads, slope protection, playfields, building layout batter boards, PSE main power, footing excavations, form work, and under-slab power/data/plumbing infrastructure are all complete.

Future Activities:

- Continued installation of all items listed above in North Wing, Administration, and Northwest Gym Wing.
- Construction of Entryway, Music, Stage, Kitchen, Multi-Purpose, and Gymnasium.
- Installation of exterior siding.
- Interior painting and installation of ceiling grid.

Attachments:

2/8-10/2016 Progress Photos

Snoqualmie Valley SD No. 410 - Pictures Taken: 2/8-10/2016 - Various a.m.
Timber Ridge Elementary **Progress Photographs**



South Wing - Windows/Roof - Dried In



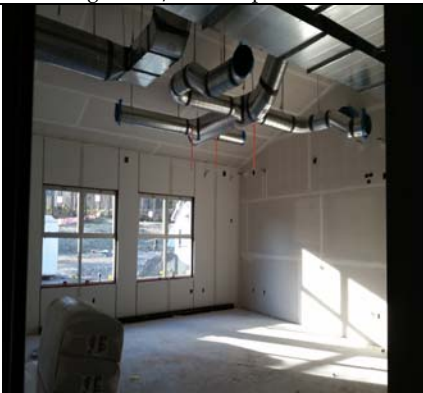
East Wing Water/Air Wrap - Ties - Block



East Wing - Same Scenario - North Side



South Wing - Insulation - HVAC Duct



Windows - Sheetrock - HVAC Ductwork



Hollow Metal Window & Door Frames



Administration - HVAC Mezzanine Walls



Library Roof Beam "Pop Up" Mock Up



From Kitchen Thru Multi-Purpose To Hall



Electrical Room Thru Gym To North Wing



Electrical Room Thru Entry To South Wing



The Administration Roof Trusses Fit