

SVSD 2015 Bond Program

Timber Ridge Elementary Progress Status Report

Date: March 4th, 2016
To: Ryan Stokes
Copy: Carolyn Malcolm, Joel Aune
From: Clint Marsh
Subject: **March 4th Current Progress Status**

Week February 26th to March 4th, as follows:

New:

Phase 2 - Building Construction

- **Library Clearstory framed - beams set - with roof sheathing nearing completion...**
- Exterior weather/air wrap, flashing/wall cleats, masonry veneer East Wing - **South Wing in process...**
- Interior/Exterior Hollow Metal Window/Door Frames in East-South Wings - **North Wing in process...**
- Large & Small Exterior Metal Windows installed in East-South-North Wings - **Administration pending...**
- Fire Sprinkler System installed in East and South Wing - **North Wing pending...**
- Heating/Ventilation Units set in the East-South-North Mechanical Mezzanines - **Library pending...**
- Walls continue in the Administration Area - **Music, Stage, Multi-Purpose and Gymnasium pending...**
- South-East-**North Wings-Library-Admin roof truss & sheathing complete - Music/Stage pending...**
- Exterior/interior air barrier installations/sealants in East and South Wings - **North Wing in process...**
- HVAC Ductwork installed in East and South Wing - **North Wing in process...**
- **Spray On/Batt** Insulation and Sheet Rock installed in East and South Wing - **North Wing in process...**
- Ice & Water Shield/Roofing Underlayment in E, S, N Wings and Library - **Administration in process...**
- Roof Shingles installed on East Wing, South and North Wing - **Administration Wing in process...**
- Spray on waterproof membrane, footing insulation, and under-slab roll out sheet membrane installation is 76% complete - **Music, Stage, Multi-Purpose and Gymnasium Wing in process...**

Previous Relevant Status Items:

- Planning, Education Specifications, Design, Permitting, Tree Harvesting, Stump Grinding, Silt Fence Installation, Off-Site Hauling Operations, Rock/Gravel Haul-In Operations, Sanitary Sewer, Storm Drainage, Water System, On-Site Surface Water Sediment Pond, Building Slab, Parking Lots, Playgrounds, Slope Sub-Grades, Water Connection to City System, transition from the Phase 1 to Phase 2 contractor, on-site processing of topsoil, crushed rock sub-base and asphalted treated base in the entry, parking lots, exit, gravel access roads, slope protection, playfields, building layout batter boards, PSE main power, footing excavations, form work, and under-slab power/data/plumbing infrastructure are all complete.

Future Activities:

- Continued installation of all items listed above in Administration, Music, Stage, and Northwest Gym Wing.
- Installation of exterior siding.
- Interior painting and installation of ceiling grid.

Attachments:

3/2/2016 Progress Photos

Snoqualmie Valley SD No. 410 - Pictures Taken: 3/2/2016 - 12:00 p.m.
Timber Ridge Elementary Progress Photographs



South Wing Exterior Masonry - South Side



Library Clearstory From South Wing



Administration Wing - South Side



Administration Connection To Library



Music/Stage - Pending Waterproof Membrane



Kitchen Pending Waterproof Membrane



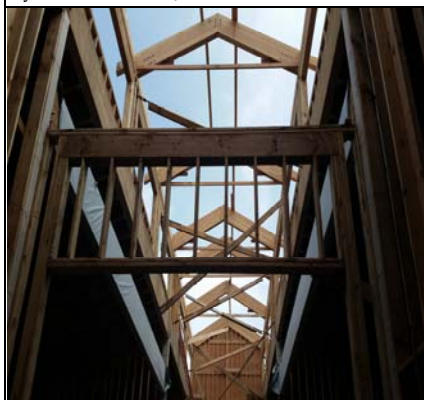
Gymnasium Data/Electrical Conduit



Kindergarten Wing North Side



Library Clearstory Framing In Process



Clearstory From Inside Library Entry



North Wing - West Side Across Playground



Entry Pending Waterproof Membrane