

# SVSD 2015 Bond Program

## Timber Ridge Elementary Progress Status Report

---

Date: June 10<sup>th</sup>, 2016  
To: Ryan Stokes  
Copy: Carolyn Malcolm, Joel Aune  
From: Clint Marsh  
Subject: **June 10th Current Progress Status**

---

Week June 3<sup>rd</sup> to June 10<sup>th</sup>, as follows:

### New:

#### ***Phase 2 - Building Construction***

- **Phone, Intercom, Clock, TV, CCTV, Data, Fire, Security Systems complete - NW Wing in process...**
- Restroom Tile, Carpeting, Wainscoting, Trim in E-S-N Wings, Admin - **NW Wing pending...**
- Rubberized Flooring in S-E-N Wings - **Library & Admin pending...**
- Sidewalk, Curbs, Gutter, **Entry Plaza & Stairs**, main vehicle & pedestrian entry construction continues...
- **Exterior Siding/Masonry Capstone on Clearstory, E-S-N Wings, Admin - NW Wing in process...**
- **Entry, Music, Stage, Multi-Purpose, Gymnasium Walls Complete - Covered Play pending...**
- Interior Painting, Ceiling Grid, Casework installed in E-S-N Wings, Library, Admin - **NW Wing pending...**
- Exterior weather wrap, flashing/wall cleats, masonry E-S-N Wings, Admin - **NW Wing in process...**
- Interior/Exterior Hollow Metal Window/Door Frames in E-S-N Wings, Admin - **NW Wing in process...**
- Exterior Metal Windows installed in E-S-N Wings, Admin - **NW Wing in process...**
- Fire Sprinkler System installed in E-S-N Wings, Admin - **NW Wing in process...**
- HVAC Units set in the E-S-N & Library Mechanical & Admin Mezzanines - **NW Wing in process...**
- S-E-N Wings-Library-Admin roof truss & sheathing complete - **Music/Stage/NW Wing in process...**
- Exterior/interior air barrier installations/sealants in E-S-N Wings, Admin - **NW Wing in process...**
- HVAC Ductwork installed in E-S-N Wings, Admin - **NW Wing in process...**
- Batt Insulation /Sheet Rock installed in E-S-N Wings, Admin, **NW Wing in process...**
- Roof Shingles installed on E-S-N Wings, Admin - **NW Wing in process...**

### Previous Relevant Status Items:

- Planning, Education Specifications, Design, Permitting, Tree Harvesting, Stump Grinding, Silt Fence Installation, Off-Site Hauling Operations, Rock/Gravel Haul-In Operations, Sanitary Sewer, Storm Drainage, Water System, On-Site Surface Water Sediment Pond, Building Slab, Parking Lots, Playgrounds, Slope Sub-Grades, Water Connection to City System, transition from the Phase 1 to Phase 2 contractor, on-site processing of topsoil, crushed rock sub-base and asphalted treated base in the entry, parking lots, exit, gravel access roads, slope protection, playfields, building layout batter boards, PSE ~~main~~ temporary power, footing excavations, form work, under-slab power/data/plumbing infrastructure, spray on waterproof membrane, footing insulation, under-slab roll out sheet membrane, concrete building slab, **ice & water shield roofing underlayment, spray on batt insulation, and main PSE power connection** are all complete.

**Future Activities: Fencing, Landscaping, Roof Gutters, Asphalt, Building Systems Commissioning...**

### Attachments:

6/8/2016 Progress Photos

**Snoqualmie Valley SD No. 410  
Timber Ridge Elementary**

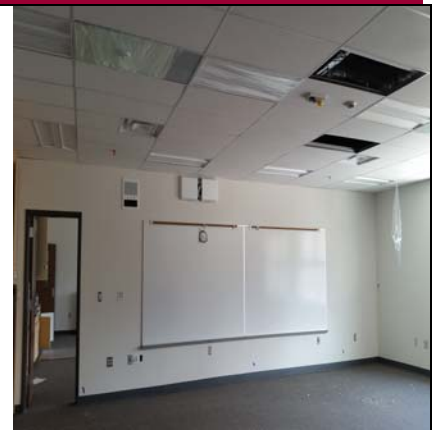
**Pictures Taken: 6/8/2016 - 11:30 a.m.  
Progress Photographs**



Hallway Flooring In North Wing



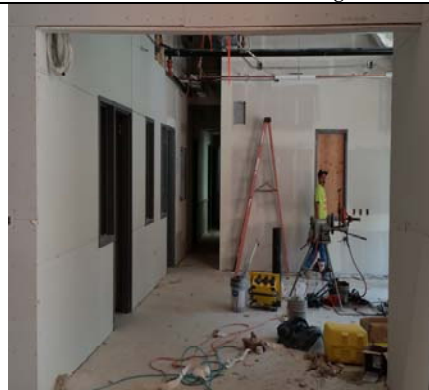
Flex-Area Casework In North Wing



Classroom Finishes - Multiple Systems



Main Hallway Ceiling Grid Installed



Admin Area Ready For Casework & Counters



NW Wing Mechanical Mezzanine



NW Wing - Spray Foam Complete



Entryway/Grand Entry Stair Construction



Entry Plaza Sitting Wall Being Formed



NW Wing - Block Masonry Continues



...Pending Weather Barrier & Masonry



...And The Painters Chasing Everyone