

SVSD 2015 Bond Program

Timber Ridge Elementary Progress Status Report

Date: June 17th, 2016
To: Ryan Stokes
Copy: Carolyn Malcolm, Joel Aune
From: Clint Marsh
Subject: **June 17th Current Progress Status**

Week June 10th to June 17th, as follows:

New:

Phase 2 - Building Construction

- Phone, Intercom, Clock, TV, CCTV, Data, Fire, Security Systems complete - **NW Wing in process...**
- Restroom Tile, Carpeting, Wainscoting, Trim in E-S-N Wings, Admin - **NW Wing pending...**
- Rubberized Flooring in S-E-N Wings - **Library & Admin pending...**
- Sidewalk, Curbs, Gutter, Entry Plaza & Stairs, main vehicle & pedestrian entry construction continues...
- Exterior Siding/Masonry Capstone on Clearstory, E-S-N Wings, Admin - **NW Wing in process...**
- Entry, Music, Stage, Multi-Purpose, Gymnasium Walls Complete - **Covered Play pending...**
- Interior Painting, Ceiling Grid, Casework installed in E-S-N Wings, Library, Admin - **NW Wing pending...**
- Exterior weather wrap, flashing/wall cleats, masonry E-S-N Wings, Admin - **NW Wing in process...**
- Interior/Exterior Hollow Metal Window/Door Frames in E-S-N Wings, Admin - **NW Wing in process...**
- Exterior Metal Windows installed in E-S-N Wings, Admin - **NW Wing in process...**
- Fire Sprinkler System installed in E-S-N Wings, Admin - **NW Wing in process...**
- HVAC Units set in the E-S-N & Library Mechanical & Admin Mezzanines - **NW Wing in process...**
- S-E-N Wings-Library-Admin roof truss & sheathing complete - **Music/Stage/NW Wing in process...**
- Exterior/interior air barrier installations/sealants in E-S-N Wings, Admin - **NW Wing in process...**
- HVAC Ductwork installed in E-S-N Wings, Admin - **NW Wing in process...**
- Batt Insulation /Sheet Rock installed in E-S-N Wings, Admin, **NW Wing in process...**
- Roof Shingles installed on E-S-N Wings, Admin - **NW Wing in process...**

Previous Relevant Status Items:

- Planning, Education Specifications, Design, Permitting, Tree Harvesting, Stump Grinding, Silt Fence Installation, Off-Site Hauling Operations, Rock/Gravel Haul-In Operations, Sanitary Sewer, Storm Drainage, Water System, On-Site Surface Water Sediment Pond, Building Slab, Parking Lots, Playgrounds, Slope Sub-Grades, Water Connection to City System, transition from the Phase 1 to Phase 2 contractor, on-site processing of topsoil, crushed rock sub-base and asphalted treated base in the entry, parking lots, exit, gravel access roads, slope protection, playfields, building layout batter boards, PSE ~~main~~ temporary power, footing excavations, form work, under-slab power/data/plumbing infrastructure, spray on waterproof membrane, footing insulation, under-slab roll out sheet membrane, concrete building slab, ice & water shield roofing underlayment, and spray on batt insulation complete-main **PSE power connection pending.**

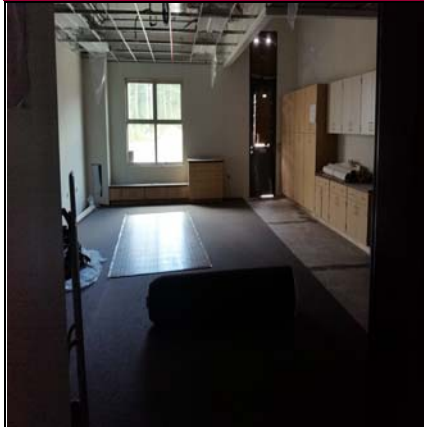
Future Activities: Fencing, Landscaping, Roof Gutters, Asphalt, Building Systems Startup-Commissioning...

Attachments:

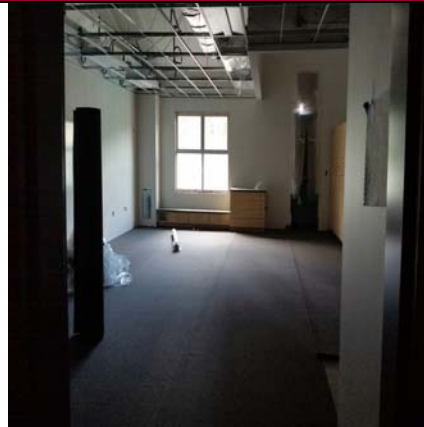
6/15/2016 Progress Photos

**Snoqualmie Valley SD No. 410
Timber Ridge Elementary**

**Pictures Taken: 6/15/2016 - 11:30 a.m.
Progress Photographs**



Kindergarten Casework & Flooring 1



Kindergarten Flooring 2



Main Hallway & Telecom Room



Administration Hallway



Multi-Purpose/Gym Operable Wall Opening



Music Room Pending Finishes



Entry Columns Pending More Block



Grand Entry Staircase



Entry - Weatherproofing Continues



NW Wing - Weather Proofing Continues



NW Wing - Masonry Block Continues



NW Wing - Roofing Nearing Completion