

SVSD 2015 Bond Program

Timber Ridge Elementary Progress Status Report

Date: June 3rd, 2016
To: Ryan Stokes
Copy: Carolyn Malcolm, Joel Aune
From: Clint Marsh
Subject: **June 3rd Current Progress Status**

Week May 27th to June 3rd, as follows:

New:

Phase 2 - Building Construction

- Restroom Tile, Carpeting, Wainscoting, Trim in E-S-N Wings - **Admin in process...**
- **Rubberized flooring in S Wing - E Wing in Process - N Wing pending...**
- **Sidewalk, curbs, gutter, and Main Vehicle & Pedestrian Entry construction continues...**
- **Exterior Siding/Masonry Capstone on Clearstory, E-S-N Wings, Admin - NW Wing in process...**
- **Entry, Music, Stage, Multi-Purpose, Gymnasium Walls-Nearing Completion - Covered Play pending...**
- Entry/Parking Lot Light Pole Bases Installed - **Interior Perimeter Light Pole Bases in process...**
- Interior painting, Ceiling grid and Casework installed in E-S-N Wings, **Library - Admin in process...**
- Exterior weather wrap, flashing/wall cleats, masonry E-S-N Wings, Admin - **NW Wing in process...**
- Interior/Exterior Hollow Metal Window/Door Frames in E-S-N Wings, Admin - **NW Wing in process...**
- Exterior Metal Windows installed in E-S-N Wings, Admin - **NW Wing in process...**
- Fire Sprinkler System installed in E-S-N Wings, Admin - **NW Wing in process...**
- HVAC Units set in the E-S-N & Library Mechanical & Admin Mezzanines - **NW Wing in process...**
- S-E-N Wings-Library-Admin roof truss & sheathing complete - **Music/Stage/NW Wing in process...**
- Exterior/interior air barrier installations/sealants in E-S-N Wings, Admin - **NW Wing in process...**
- HVAC Ductwork installed in E-S-N Wings, Admin - **NW Wing in process...**
- Spray On/Batt Insulation/Sheet Rock installed in E-S-N Wings, Admin - **NW Wing in process...**
- Ice/Water Shield/Roofing Underlayment in E-S-N Wings, Admin, Library - **NW Wing in process...**
- Roof Shingles installed on E-S-N Wings, Admin - **NW Wing in process...**

Previous Relevant Status Items:

- Planning, Education Specifications, Design, Permitting, Tree Harvesting, Stump Grinding, Silt Fence Installation, Off-Site Hauling Operations, Rock/Gravel Haul-In Operations, Sanitary Sewer, Storm Drainage, Water System, On-Site Surface Water Sediment Pond, Building Slab, Parking Lots, Playgrounds, Slope Sub-Grades, Water Connection to City System, transition from the Phase 1 to Phase 2 contractor, on-site processing of topsoil, crushed rock sub-base and asphalted treated base in the entry, parking lots, exit, gravel access roads, slope protection, playfields, building layout batter boards, PSE main power, footing excavations, form work, under-slab power/data/plumbing infrastructure, spray on waterproof membrane, footing insulation, under-slab roll out sheet membrane, concrete building slab are all complete.

Future Activities: Landscaping, Roof Gutters, Asphalt, Building Systems Commissioning...

Attachments:

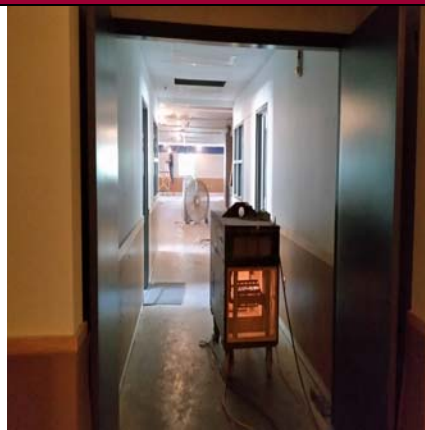
6/1/2016 Progress Photos

**Snoqualmie Valley SD No. 410
Timber Ridge Elementary**

**Pictures Taken: 6/1/2016 - 11:30 a.m.
Progress Photographs**



Hallway Flooring In South Wing



More Flooring Heat In East & North Wings



Clearstory Nearing Final Finishes



Main Hallway Coming Together



Kindergarten Casework Going In



Main Plumbing & Fire Line Connections



NW Wing Mechanical Mezzanine Progress



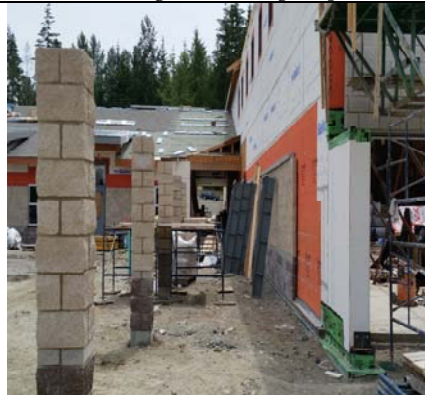
Kitchen/Serving Area Taking Shape



NW Wing Trusses Pending Installation



NW Wing Dry In - Pending Windows



Entry & Exit Walkway Columns Are Up



Sidewalks Moving Around The North Side