

# SVSD 2015 Bond Program

## Timber Ridge Elementary Progress Status Report

---

Date: July 22<sup>nd</sup>, 2016  
To: Ryan Stokes  
Copy: Carolyn Malcolm, Joel Aune  
From: Clint Marsh  
Subject: July 22nd Current Progress Status

---

Week July 15<sup>th</sup> to July 22<sup>nd</sup>, as follows:

### New:

#### ***Phase 2 - Building Construction***

- **Asphalt paving of playground, emergency fire access, and main entry complete...**
  - Parking lots and bus entry pending...
- **Building Systems Startup and Commissioning continues...**
- **Fencing, Roof Gutters, Downspouts, Landscaping installations continues...**
- **Sidewalk, Curbs, Gutters, Entry Plaza/Stairs, Main Vehicle/Pedestrian Entry construction continues...**
- **Covered Play construction continues...**
  - Climbing/Play Structure and game line installations pending...
- **Northwest Gymnasium Wing: Basketball Equipment, Acoustical Wall Panels Wall cleats/Masonry, Capstone, Exterior Siding, Interior/Exterior Hollow Metal Window/Door Frames, Fire Sprinkler System, HVAC Equipment, Interior Painting, Ceilings, Casework, Restroom Tile, Carpeting, Wainscoting, Phone, Intercom, Clock, TV, CCTV, Data, Fire, and Building Automation Systems continues...**
  - Maple gymnasium flooring installation and striping pending...
  - Climbing Wall installation pending...
  - Rubberized and Non-Slip Flooring installation pending...

### Previous Relevant Status Items:

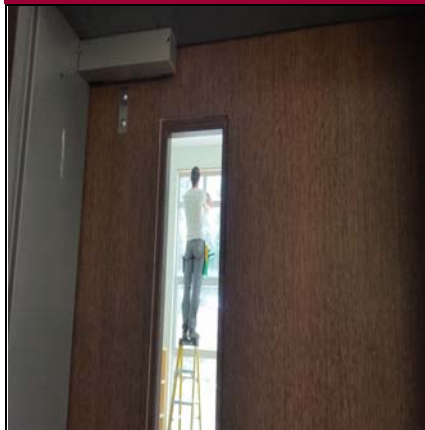
- Planning, Education Specifications, Design, Permitting, Tree Harvesting, Stump Grinding, Silt Fence Installation, Off-Site Hauling Operations, Rock/Gravel Haul-In Operations, Sanitary Sewer, Storm Drainage, Water System, On-Site Surface Water Sediment Pond, Building Slab, Parking Lots, Playgrounds, Slope Sub-Grades, Water Connection to City System, transition from the Phase 1 to Phase 2 contractor, on-site processing of topsoil, crushed rock sub-base and asphalted treated base in the entry, parking lots, exit, gravel access roads, slope protection, playfields, building layout batter boards, PSE temporary power, footing excavations, form work, under-slab power/data/plumbing infrastructure, spray on waterproof membrane, footing insulation, under-slab roll out sheet membrane, concrete building slab, ice & water shield roofing underlayment, spray on batt insulation, main PSE power, HVAC Mechanical Mezzanines, truss/sheathing roofing, exterior/interior air barrier installation/sealants, exterior flashing/weather wrap, PSE Gas Meter, and exterior metal windows complete-(storefront windows pending end of glazier strike)

**Future Activities: Exterior: Light poles/Lights-Flagpole-Site Furnishings-Bicycle Racks-Entry Control Gates-Exterior Signage**

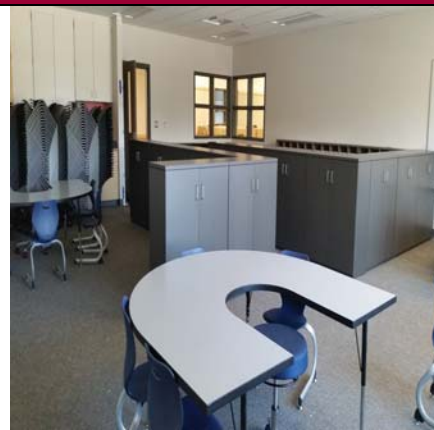
**Interior: Operable Walls - Interior Signage**

### Attachments:

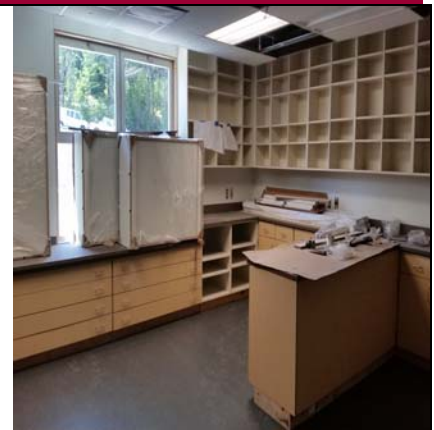
7/20/2016 Progress Photos



Door Hardware & Window Cleaning



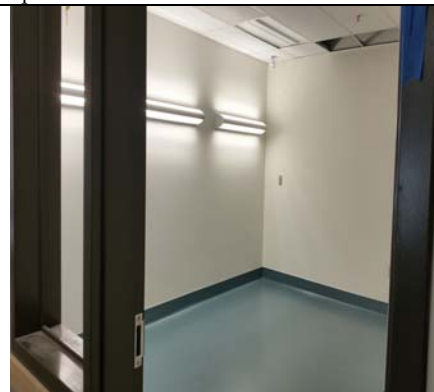
Special Education Classroom



Staff Workroom



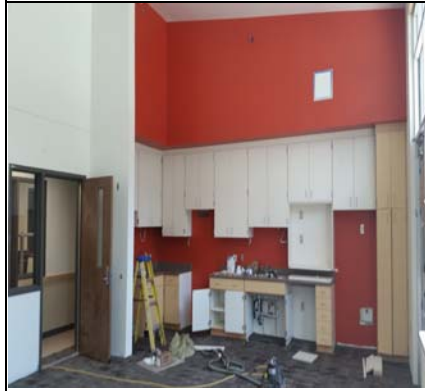
Staff Office



Nurses Room Pending Beds & Curtains



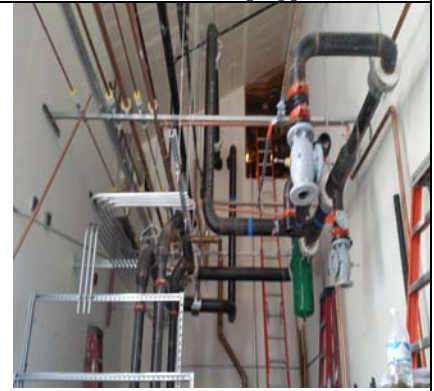
Conference Room Storing Appliances



Staff Lunch Room Awaiting Appliances



Admin Entry Storing More Casework



Boiler Room Pipe / Connections In Process



Kitchen Awaiting Walk-in Freezer/Cooler



Gym Restrooms Awaiting Grout & Fixtures



Gym Acoustical Tile - Lights - BB Hoops