

# SVSD 2015 Bond Program

## Timber Ridge Elementary Progress Status Report

---

Date: July 29<sup>th</sup>, 2016  
To: Ryan Stokes  
Copy: Carolyn Malcolm, Joel Aune  
From: Clint Marsh  
Subject: **July 29th Current Progress Status**

---

Week July 22<sup>nd</sup> to July 29<sup>th</sup>, as follows:

### New:

#### ***Phase 2 - Building Construction***

- **Boiler startup, HVAC startup, air balancing/testing, fire alarm testing and commissioning in process...**
- **Landscaping of grounds in process...**
- **Asphalt paving of parking lots and bus entry pending...**
- **Kitchen equipment installation in process...**
- **Fencing, Roof Gutters, Downspouts, Landscaping installations continues...**
- **Covered Play construction continues...**
  - **Climbing/Play Structure and game line installations pending...**
- **Northwest Gymnasium Wing:**
  - **Maple gymnasium flooring installation and striping in process...**
  - **Climbing Wall installation pending...**
  - **Rubberized and Non-Slip Flooring installation pending...**

### Previous Relevant Status Items:

- Planning, Education Specifications, Design, Permitting, Tree Harvesting, Stump Grinding, Silt Fence Installation, Off-Site Hauling Operations, Rock/Gravel Haul-In Operations, Sanitary Sewer, Storm Drainage, Water System, On-Site Surface Water Sediment Pond, Building Slab, Parking Lots, Playgrounds, Slope Sub-Grades, Water Connection to City System, transition from the Phase 1 to Phase 2 contractor, on-site processing of topsoil, crushed rock sub-base and asphalted treated base in the entry, parking lots, exit, gravel access roads, slope protection, playfields, building layout batter boards, PSE temporary power, footing excavations, form work, under-slab power/data/plumbing infrastructure, spray on waterproof membrane, footing insulation, under-slab roll out sheet membrane, concrete building slab, ice & water shield roofing underlayment, spray on batt insulation, main PSE power, HVAC Mechanical Mezzanines, truss/sheathing roofing, exterior/interior air barrier installation/sealants, exterior flashing/weather wrap, PSE Gas Meter, exterior metal windows, masonry, capstone, acoustical wall panels, wainscoting, acoustical ceilings, ceiling grid, casework, restroom tile, exterior/interior hollow metal doors/frames, basketball equipment, gymnasium partition screen, fire sprinkler system, HVAC equipment, fire alarm, clock, data wiring, building automation systems, sidewalks, curb, gutters complete...

**Future Activities: Exterior: Light poles/Lights-Flagpole-Site Furnishings-Bicycle Racks-Entry Control Gates-Exterior Signage**

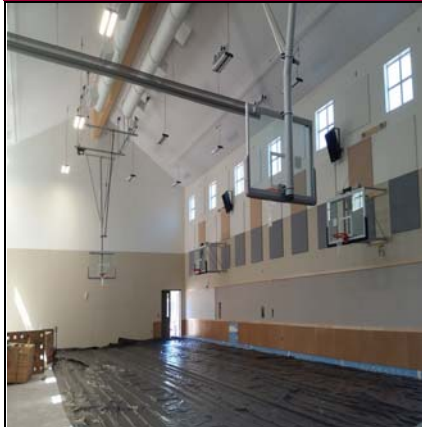
**Interior: Operable Walls - Interior Signage**

### Attachments:

7/27/2016 Progress Photos

**Snoqualmie Valley SD No. 410  
Timber Ridge Elementary**

**Pictures Taken: 7/27/2016 - 11:30 a.m.  
Progress Photographs**



Gym Partition & Flooring Preparation



Gym Floor Plywood Sub-Flooring



Main Entry Hallway In Process



Administration Office Floor Preparation



Parking Island Curb And Gutter Forming



Handicap Access Island Being Poured



PSE Gas Meter And Assembly Ready



Boilers And Controls Ready For Start Up



Hydronic Pumps Wired And Ready



Irrigation Control And Landscape Base



Covered Play Glulam Frame In Process



Covered Play Pending Roofing & Asphalt