

# SVSD 2015 Bond Program

## Timber Ridge Elementary Progress Status Report

---

Date: August 5<sup>th</sup>, 2016  
To: Ryan Stokes  
Copy: Carolyn Malcolm, Joel Aune  
From: Clint Marsh  
Subject: **August 5th Current Progress Status**

---

Week July 29<sup>th</sup> to August 5<sup>th</sup>, as follows:

### New:

#### ***Phase 2 - Building Construction***

- **Air balancing/testing, fire alarm testing and building systems commissioning continues...**
- **Landscaping of grounds continues...**
- **Kitchen equipment installation continues...**
- **Fencing, Roof Gutters, Downspouts, Landscaping installations continues...**
- **Covered Play construction continues...**
  - **Climbing/Play Structure and game line installations has begun...**
- **Northwest Gymnasium Wing:**
  - **Maple gymnasium flooring installation and striping is nearing completion...**
  - **Rubberized and Non-Slip Flooring installation has begun...**
  - **Climbing Wall installation pending...**

### Previous Relevant Status Items:

- Planning, Education Specifications, Design, Permitting, Tree Harvesting, Stump Grinding, Silt Fence Installation, Off-Site Hauling Operations, Rock/Gravel Haul-In Operations, Sanitary Sewer, Storm Drainage, Water System, On-Site Surface Water Sediment Pond, Building Slab, Parking Lots, Playgrounds, Slope Sub-Grades, Water Connection to City System, transition from the Phase 1 to Phase 2 contractor, on-site processing of topsoil, crushed rock sub-base and asphalted treated base in the entry, parking lots, exit, gravel access roads, slope protection, playfields, building layout batter boards, PSE temporary power, footing excavations, form work, under-slab power/data/plumbing infrastructure, spray on waterproof membrane, footing insulation, under-slab roll out sheet membrane, concrete building slab, ice & water shield roofing underlayment, spray on batt insulation, main PSE power, HVAC Mechanical Mezzanines, truss/sheathing roofing, exterior/interior air barrier installation/sealants, exterior flashing/weather wrap, PSE Gas Meter, exterior metal windows, masonry, capstone, acoustical wall panels, wainscoting, acoustical ceilings, ceiling grid, casework, restroom tile, exterior/interior hollow metal doors/frames, basketball equipment, gymnasium partition screen, fire sprinkler system, HVAC equipment, fire alarm, clock, data wiring, building automation systems, **sidewalks, curb, gutters, and asphalt entry/driveways/parking lots complete...**

**Future Activities:** Exterior: Light poles/Lights - Flagpole - Site Furnishings - Bicycle Racks - Entry Control Gates - Exterior Signage - Final JHA Building Inspections

Interior: Operable Walls - Interior Signage - Library Books - Teacher Boxes - Temporary Certificate of Occupancy

### Attachments:

8/3/2016 Progress Photos



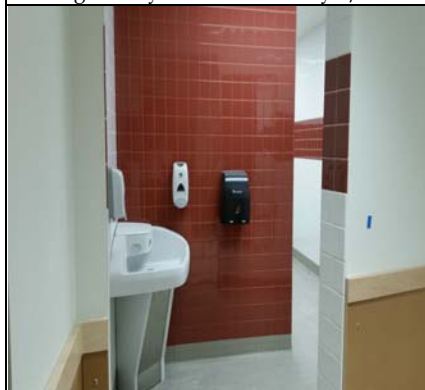
Sanding The Gym Floor - Tuesday 8/2



Gym Floor Finish - Preparing For Striping



Gym Entry-Trophy Cases-Storage Closets



Bathrooms Ready For Supplies



Staff Lunch Room Appliances Installed



Teacher Mail Boxes Installed/Workroom



Interior Classroom Blinds - Hallway



Interior Classroom Blinds - Exterior Wall



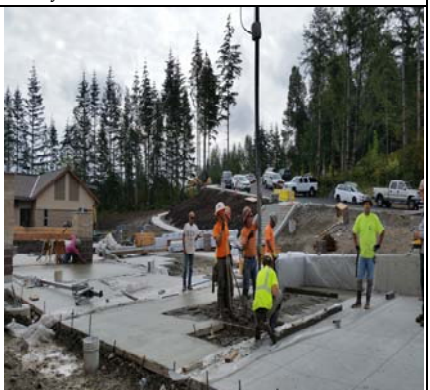
Entry Into The Administration Office



Building Access From Administration



Rear Hallway Access Pending Vestibule



Main Entry Plaza Sidewalk In Process