

SVSD 2015 Bond Program

Elementary #6 Progress Status Report

Date: September 25th, 2015
To: Ryan Stokes
Copy: Carolyn Malcolm, Joel Aune
From: Clint Marsh
Subject: **September 25th Current Progress Status**

Week September 18th to September 25th, as follows:

New:

Phase 1 - Site Development Construction

- Playfield was grass hydro-seeded today - Phase 1 is now complete.

Phase 2 - Building Construction

- Classroom Wings - ~~East, North, and South~~ **Revised** South, East, North Construction has begun:
 - Building footings dug in the South and East Wings.
 - Building footing concrete forms built in the South Wing.
 - Concrete footings have been poured in the South Wing.
 - Stem wall forms built in the South Wing.
 - Concrete stem walls have been poured in the South Wing.
- Batter boards continue to be installed for building footing layout throughout.
- The site has begun to turn black (asphalt), green (various grasses), gray (rock & concrete), and tan (straw mulch) as these surfaces will protect the site from the negative weather conditions that are expected...

Previous Relevant Status Items:

- Planning, Education Specifications, Design, Permitting, Tree Harvesting, Stump Grinding, Silt Fence Installation, Off-Site Hauling Operations, Rock/Gravel Haul-In Operations, Sanitary Sewer, Storm Drainage, Water System, On-Site Surface Water Sediment Pond, Building Slab, Parking Lots, Playgrounds, Slope Sub-Grades, Water Connection to City System, transition from the Phase 1 to Phase 2 contractor, on-site processing of topsoil, crushed rock sub-base and asphalted treated base in the entry, parking lots, exit, on-site gravel work access roads, slope protection, and playfields have all been completed.

Future Activities:

- Digging out the remaining building footings.
- Forming the concrete footings, foundations, stem walls, throughout.
- Pouring concrete into the building footing forms.
- Installing all associated plumbing, mechanical, electrical, data infrastructure.
- Installation of vapor/water barrier under slab sheet membrane and spray on stem wall membrane.
- Pouring of concrete slabs.

Attachments:

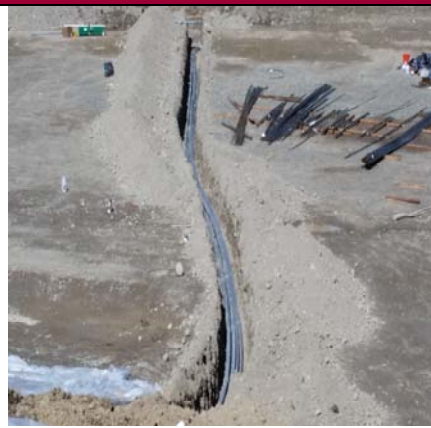
9-23-2015 Progress Photos

**Snoqualmie Valley SD No. 410
New Elementary #6**

**Pictures Taken: 9/23/2015 @ 9:25 a.m.
Progress Photographs**



Ecology Block Field Barriers



More Underground Electrical/Data



Looking NW Toward The Future Entry



Holding Water On Site After The Rain



More Mulch On The Rest Of The Slopes



Stem Wall Forms Being Built



Interior Footings Being Built



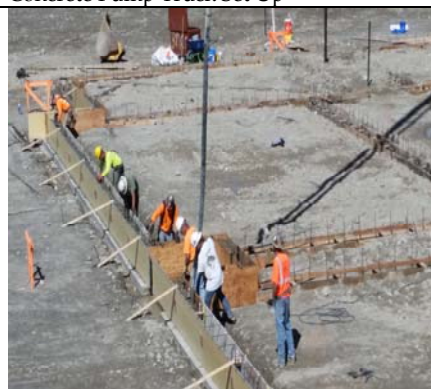
Concrete Pump Truck Set Up



South Classroom Wing Stem Wall Set Up



Stem Wall Concrete Pour Begins



...and Continues Down The Side



...Around The Corner And Other Side...