

Opportunity, Excellence, Well-being & Technology for ALL Students



**Snoqualmie Valley
School District #410**
PO Box 400
Snoqualmie, WA 98065-0400

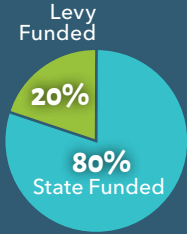
ECRWSEDDM
Postal Customer

Non-Profit Org.
U.S. POSTAGE
PAID
Permit No. 8
Snoqualmie, WA

ECRWSS

TWO REPLACEMENT LEVIES ON THE FEBRUARY 8, 2022 BALLOT

Every four years Snoqualmie Valley Schools must renew school levies to continue vital programs and staff positions not covered by the state. Our current levies expire in 2022, so we're asking our community to consider renewing our two levies to sustain services for 2023-2026.



The **EDUCATIONAL PROGRAMS & OPERATIONS (EP&O) LEVY** covers 20% of our district's services, including vital student programs like music, art, athletics, after school clubs, electives and career exploration; and 1 out of 5 of all staff such as counselors, nurses, assistant principals, teachers, paraeducators, school security, substitutes and others.



The **TECHNOLOGY LEVY** covers 80% of our district's technology needs including hardware for all, staffing and training, software and connectivity.

IMPORTANT ELECTION DATES

- Jan. 19** Ballots mailed to voters
- Jan. 31** Online or mail-in voter registration deadline
- Feb. 8** ELECTION DAY

Ballots must be postmarked or returned to a ballot drop box by 8 p.m. No stamps are needed.



OPPORTUNITY

- Career & Technical Education (CTE) & Other Electives
- Extracurricular Activities, Athletics, Clubs
- Middle School Music, Art, World Language, Math Pathways
- Advanced & Specialized Courses: Advance Placement (AP), Gifted Services K-5 (STREAM), College Prep (AVID)



EXCELLENCE

- Math & Reading Specialists
- Staff Training & Competitive Wages
- Instructional Coaches & Curriculum
- Special Education
- Paraeducators & Substitutes



WELL-BEING

- Counselors & Behavioral Health Support
- Mental Health Focus – Social Emotional Learning
- Nurses & Health Room Assistants
- Food Services, Breakfast Availability



TECHNOLOGY

- Hardware Devices
- Tech Support Staff & Training
- Software & Connectivity
- Elementary Coding Teachers
- Security & Communication Systems

 **Qualifying senior citizens and persons with disabilities may be exempt from paying school levies.** Contact the King County Assessor for more information at 206-296-3920.

The above are examples of levy supported services, not a comprehensive list.

SNOQUALMIE VALLEY SCHOOLS – Sustaining a Tradition of Opportunity, Excellence, and Well-being for ALL Students!

Families choose Snoqualmie Valley schools so their children can receive an excellent education, enjoy rich learning opportunities and activities, and be served by staff who truly care for them. Our families also expect up-to-date and reliable technology for their students. Local levy funding makes this possible. Renewal of our district's expiring levies ensures ALL students will continue to have access to learning opportunities, quality teaching, tech resources, and support for four more years.

**VOTE ON TWO
REPLACEMENT
LEVIES – IN THE
FEB 8, 2022
ELECTION**

Our Commitment to Excellence = Your Return on Investment



Test scores and graduation rates far above state averages



National award-winning performing and visual arts



Wide range of advanced and accelerated course options



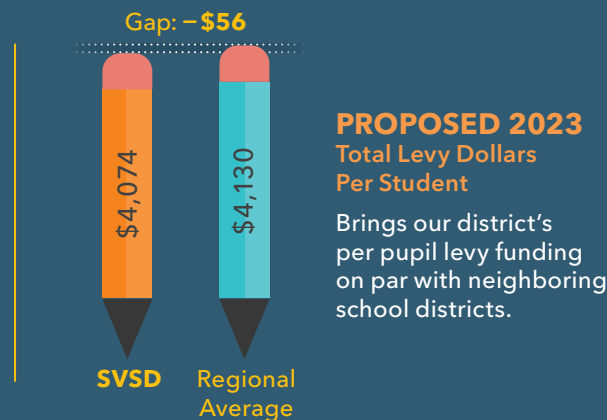
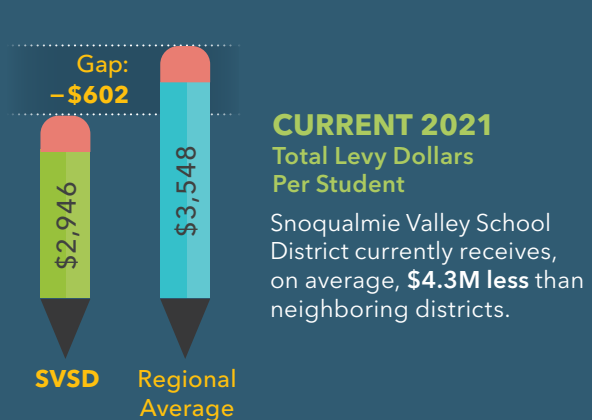
State and national award-winning activities and athletics



Outstanding services for students with disabilities

Funding Educational Excellence: How We Keep Pace

We offer some of the best educational programs and services on the Eastside. However, maintaining our high-quality opportunities with a competitive labor market, growing inflation and supply chain issues, requires levy adjustments – adjustments that neighboring school districts have already made.

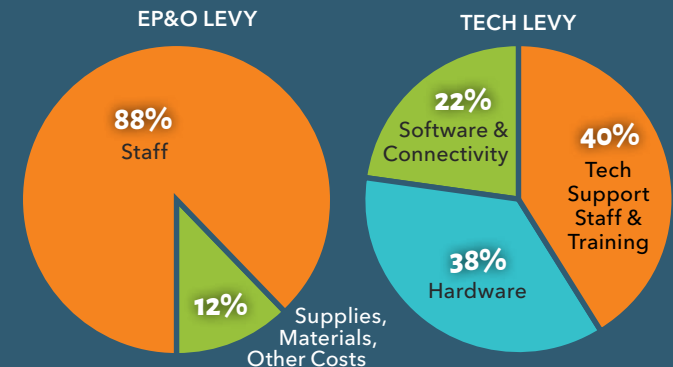


COMBINED LEVY PROPOSALS - UP FOR RENEWAL

Year	EP&O Levy	Cost/\$1000 Assessed Value (est.)	Tech Levy	Cost/\$1000 Assessed Value (est.)
2023	\$20,585,000	1.59	\$8,039,000	0.62
2024	\$21,472,000	1.55	\$8,602,000	0.62
2025	\$22,382,000	1.51	\$9,204,000	0.62
2026	\$23,473,000	1.48	\$9,848,000	0.62

If approved, the estimated tax rate for both levies in 2023 will be **\$2.21**/\$1,000 assessed property value.

HOW WILL THE LEVY FUNDS BE USED?



Levies Support ALL Students

For example, thanks to the levy:

- ALL students have a laptop device
- ALL K-5 students are in coding classes
- ALL schools have nurses and/or health room assistants
- ALL middle and high schoolers have access to athletics, activities and clubs
- ALL high schoolers get an extra CTE or elective class

For more levy information, please visit our district website at: www.svsd410.org.