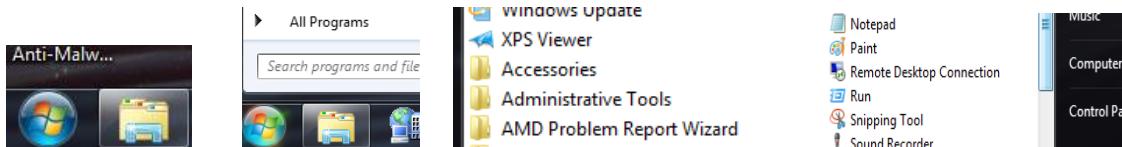


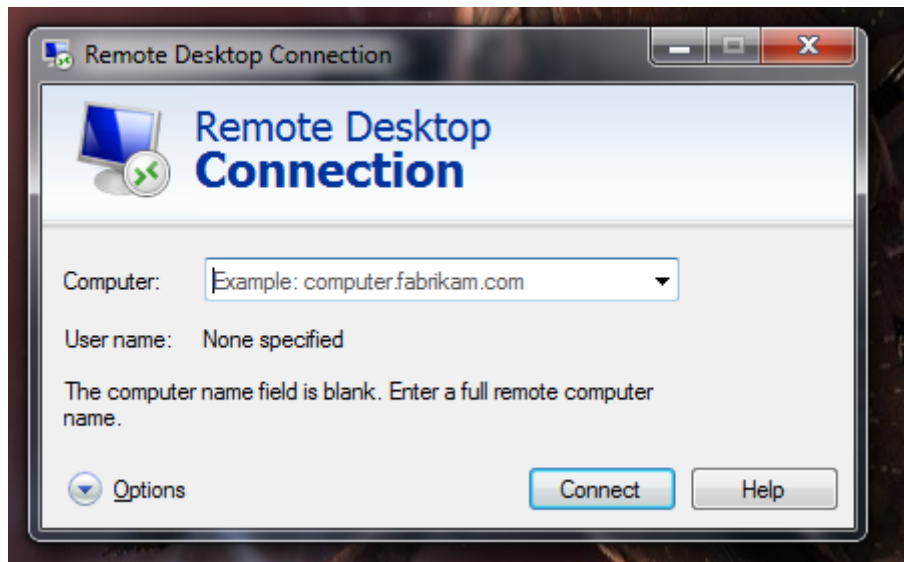
## Remote Access

To remote access the terminal server from outside of the district

1. Go to start -> All Programs -> Accessories -> Remote Desktop Connection.



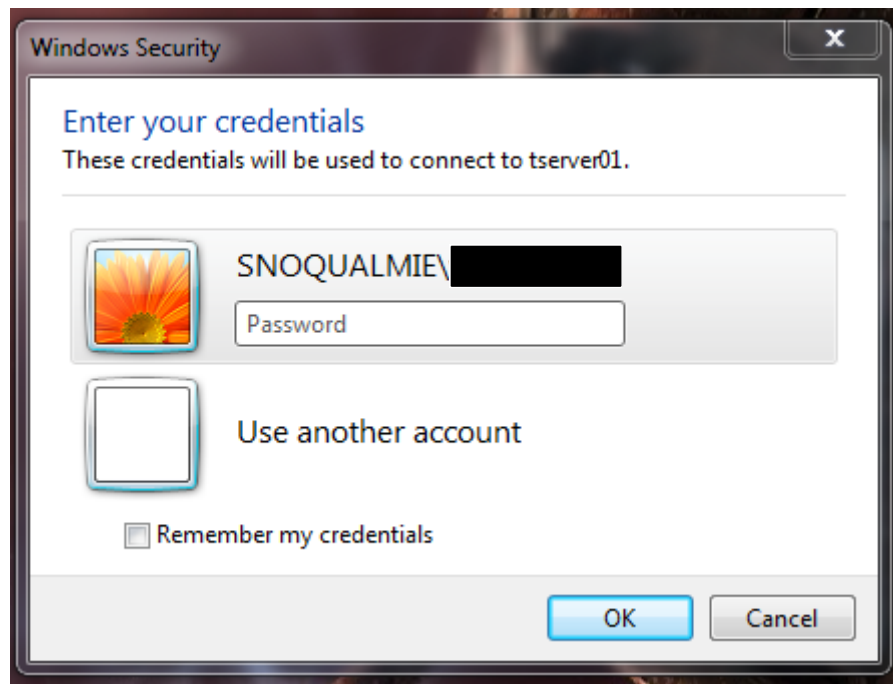
You will get a pop up that looks like this.



Where is says computer put in this address:

**tserver01.svsd410.org**

You will then get a windows security popup that wants you to enter your credentials.



Your credentials are the same ones that you log on to a computer with in the district. You do have to match the format above with the domain.

It should look like this:

Snoqualmie\yourusername

Your password is also the same you use to log in to district computers.

If there is a certificate error when it first logs in, click Accept or OK.

You are now logged into the terminal server!